

Next Meeting  
April 10, 2014, 7:00 P.M.  
Elk Grove Library, 1001 Wellington Ave.

Club Contact  
Bob Roels 847-818-5296  
r.robert11@comcast.net

# Illinois Spoonplugger

## April 2014

### Dues!

Jim Taylor continues to accept dues. Dues are \$20. Total membership remains about the same. All checks should be made out to James Taylor, and if you cannot make the meeting send your payment to James Taylor, 1367 Loch Lomond Dr, Crystal Lake, IL 60014

### March Club Meeting

The meeting was discussion and planning for the "Winter seminar" which occurred without a hitch (maybe a hiccup).

### March Fishing Report

- **Brett Christensen** - Sailfishing in the keys. Kites are used to control depth and speed of livebait. The kite suspends the live bait near the surface with a minimum of drag for the bait to move like mad! The kites and baits are trolled along a breakline. Fish were in one area. Being a guest on his uncle's boat Brett did not insist they limit their efforts to one area.
- **Jim Duplex** - Charter boat in Gulf - Jim had a similar experience where boat had planned drifts and fish came from certain areas, however, the boat continued its planned drifts over and did not concentrate on the fish producing areas. Jim felt he could have done a much better job fishing from shore.
- **Bink (Mike Lynch)** - Posted his reports on Spoonplug.net

### Seminar, Brett Christensen

Dear Club,

We had a successful seminar today with about 52 attending and we had some new people in the audience, thanks to Jim Shell and Structure Fishing promoting the event to individuals that purchased education materials from his website.

I want to say that we should all be very proud of our club based on the support and input from all of you leading up to today and today itself. A big thanks to all the club members and special thanks to a number of you that offered to do some heavy lifting. It's great to know we can count on each other and it really shows with this event. For those that couldn't make it today we understand and we will be sure to make some copies of the video for you to view from the library. There were also requests from other clubs with members that couldn't attend to get a copy of the video so we will try and accommodate requests for copies to purchase depending on the time commitment to put together and cost involved.

A quick mention to the members of Lunker Hunters for their healthy attendance at the meeting. I know a few of you attend their outing every year and hopefully we can show our support again this year for their outing with a nice turnout from IL. Indiana also gets a shout out for attendance today. Please make consideration in your already busy schedules for all of these outings this year:

Lunker Hunters Outing July 9-13, Muskegon, MI

N. Indiana Outing August 13-16, Tippecanoe area lakes

Leoni Outing June 17-22, Jackson MI

### Seminar News (What won't be in the tapes)

Mike Beck's his custom spoonplugging rods were on display and looked fantastic. John's one and only JB1 and JB2 were available and Jerry Borst had his lure knockers. Jerry is also developing a proto type rock. The rock with hook has been producing fish at Milwaukee harbor. Since fish have never seen a rock as a lure it should be a fantastic bait until the fish have seen this bait too often.

### Seminar - Where Can IL Spoonpluggers Apply Reservoirs And Medium River Seminar Lessons?

Below are a few of the closest I am aware of.

- Lake Wisconsin - Contrary to the name, the lake is a reservoir, and in the headwater you are fishing the Wisconsin river
- Saint Joseph River - Probably the Michigan section is closer to those in NE IL/

- Rock River, WI and IL
- Fox River, Batavia, IL
- Shabbona – 10hp limit
- Lake Clinton – No limit
- Evergreen Lake, Bloomington, IL – 10 hp limit
- Lake Bloomington – 25 hp limit
- Pierce Lake – Rockford IL – Hp Limit

**2014 Club Calendar**

**April 10** - Club meeting, Elk Grove Library  
**May 11-11** - Lake Erie SMB! Bass Islands, Contact Brett Christensen  
**May 8** - Club meeting, Elk Grove Library  
**1st or 3rd May Weekend** - Return to Lake Saint Clair, Contact: Jim Duplex  
**June 12** - Club meeting, Elk Grove Library  
**June 17-22** - Leoni Spoonpluggers’ Outing, Jackson, MI Contact: John Zaborny - [jszaborny@yahoo.com](mailto:jszaborny@yahoo.com) 517-414- 3596  
**July 10** - Club meeting, Elk Grove Library  
**July 9-13** - Lunker Hunters’ Outing, Fisherman’s Landing Contact: Chase Klinesteker - [Ckspoonpl1@aol.com](mailto:Ckspoonpl1@aol.com) 616-949-8665  
**August 13-16** - Northern Indiana Spoonpluggers’

“Buck Sez” Outing, Tippecanoe, Webster, Wawasee Lakes, Forest Ridge Campground (260-327-3551)  
 Contacts: John Bales - [johnspoon@embarqmail.com](mailto:johnspoon@embarqmail.com) 260- 854-3921, or Ted Walter: [ahbwalter@gmail.com](mailto:ahbwalter@gmail.com) 260-668-0216,  
**August 14** - Club meeting, Elk Grove Library  
**September 11** - Club meeting, Elk Grove Library  
**October 9** - Club meeting, Elk Grove Library  
**October 11** - Buck Perry Memorial Outing, Taylorsville, NC, Contacts: Terry O’Malley 828-855-0746 and Jeri Perry 828-632-8058 [buckperry90@gmail.com](mailto:buckperry90@gmail.com)  
**November 13** - Club meeting Elk Grove Library  
**December 11** - Christmas Party, Giordanos, Westchester

**Spoonplugger Resources**

Equipment/materials	Supplier	Contact
Quarterly newsletter, videos, spoonplugging guides	National Spoonpluggers of America	<a href="http://nsoa.info/">http://nsoa.info/</a>
Book, home study guide, spoonplugs, No-boline, and rod	Buck’s Baits Inc, <a href="http://www.buckperry.com">www.buckperry.com</a> PO Box 66,Hickory, NC 28603	Scott Jenkins, 828-428-4650 <a href="mailto:scottjenkins@bellsouth.net">scottjenkins@bellsouth.net</a>
Blades, and JB’s	Johnny B’s, John Bales	<a href="http://johnnyb-lures.com/">http://johnnyb-lures.com/</a>
Plug Knocker	Jerry Borst	<a href="mailto:jborst@joltmail.com">jborst@joltmail.com</a>
Custom Spoonplug rods	Mike Beck	<a href="mailto:Mwbeck54@gmail.com">Mwbeck54@gmail.com</a> , 612-716-2265
Videos	Spoonplugger films	Stephen Gillian
	Structure Fishing	Jim Shell, <a href="http://structurefishing.com/">http://structurefishing.com/</a> <a href="mailto:jshell@structurefishing.com">jshell@structurefishing.com</a>

**Spoonplugging Instructors**

John Bales - [johnspoon@embarqmail.com](mailto:johnspoon@embarqmail.com)  
 Jerry Borst - [jborst@joltmail.com](mailto:jborst@joltmail.com)  
 Dennis Coulardot - [coular@peoplepc.com](mailto:coular@peoplepc.com)  
 Chase Klinesteker - [ckspoonpl1@aol.com](mailto:ckspoonpl1@aol.com)  
 Terry O’Malley - 828-855-0746  
 Ted Walter - [ahbwalter@gmail.com](mailto:ahbwalter@gmail.com)  
 John Zaborny - [jzspoonplug@hotmail.com](mailto:jzspoonplug@hotmail.com)  
 Barry Zorzanello - [bzorzanello@petraconstruction.com](mailto:bzorzanello@petraconstruction.com)

**Google Earth Use and Examples – Bob Roels**

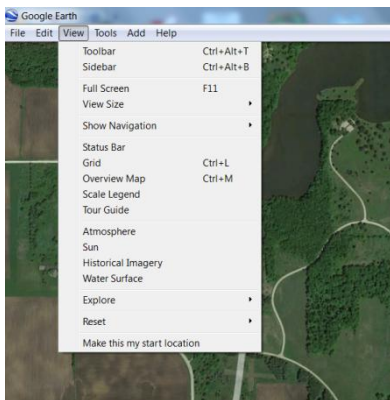
Brett Christensen had asked “how to use the history views” of google earth. John Bales in the seminar also said google earth is one of the most valuable tools we can use prior to going fishing. I will share how to use this tool so you can get answers to as many questions I can before going fishing. Questions you should be asking

- Water color
  - Seasonal water color
- Inflow and outflow
  - Seasonal flows

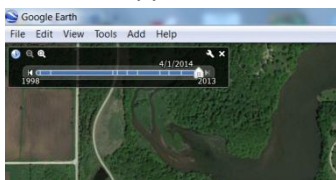
- Launches and launch condition
- Weed condition
  - Surface
  - sub surface
- Brush, trees
  - Clear cut
  - Partial cut
  - Left standing
- Humps, points, bars
- Man-made Features
  - Submerged roads
  - Causeways
  - Dam
  - Riprap
- Changes in bottom conditions on shore or visible in water
  - Sand
  - Rocks
  - Gravel
  - Dirt
  - Farm land
- Channel diversion at dam
- Has the landscape in the area of the causeway/dam changed? If not the borrow pits are likely to be nearby in the lake.
- Channel at headwater, feeder creeks
  - Flatland
  - Lowland
  - Delta
  - Highland
- Boat traffic
- Bait shops to get fishing information. Buck asked for it. See old articles
- Shoreline reference points
  - Water towers
  - Electrical towers
  - Shoreline restaurants, marinas, golf courses, and any unique feature to help you never be lost on the water.
- More uses – Routes and places
  - Routes
    - Outline a weedline for a hard copy paper map for on the water.
    - Download as trail on gps
  - Places
    - Mark most likely contact areas for paper map
    - Take coordinates for gps

Google Earth is a free download.

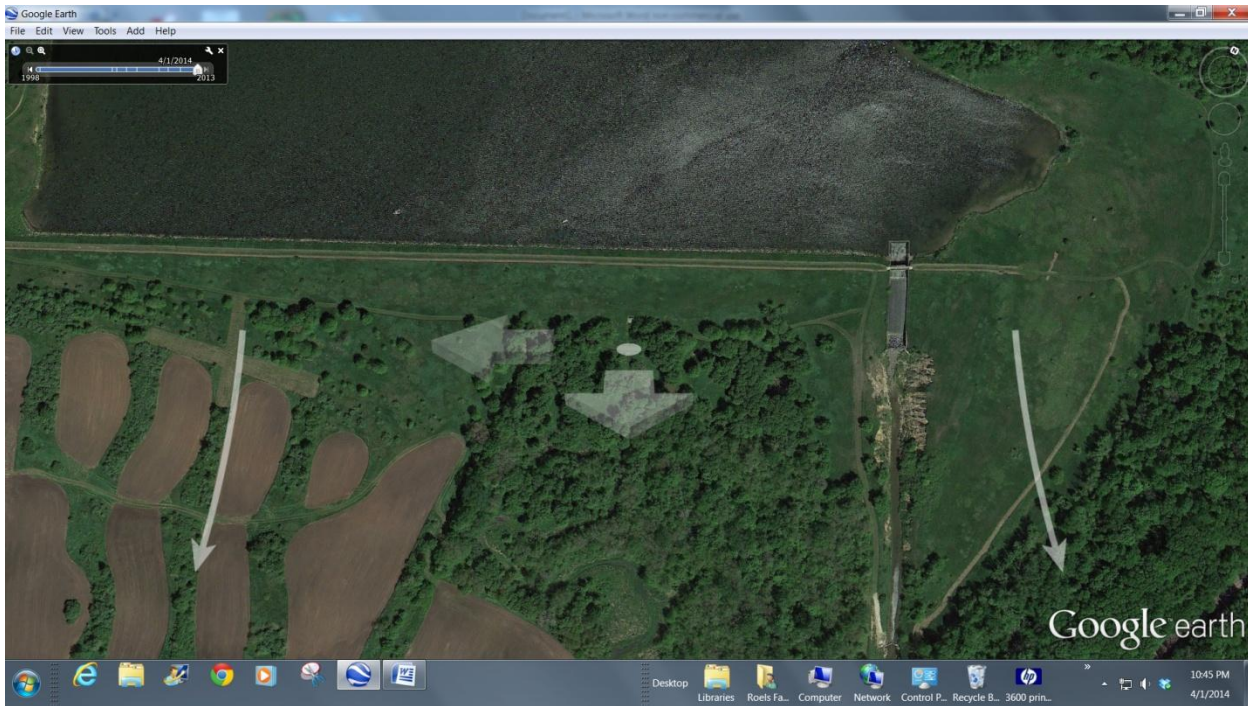
Highlight "Views" ->Check "Sidebar" & "Historical Imagery"



Slider bar appears and searches are done in "Sidebar"



Shabbona, 2014 view can you see the original river channel before it was diverted at Lake Shabbona?



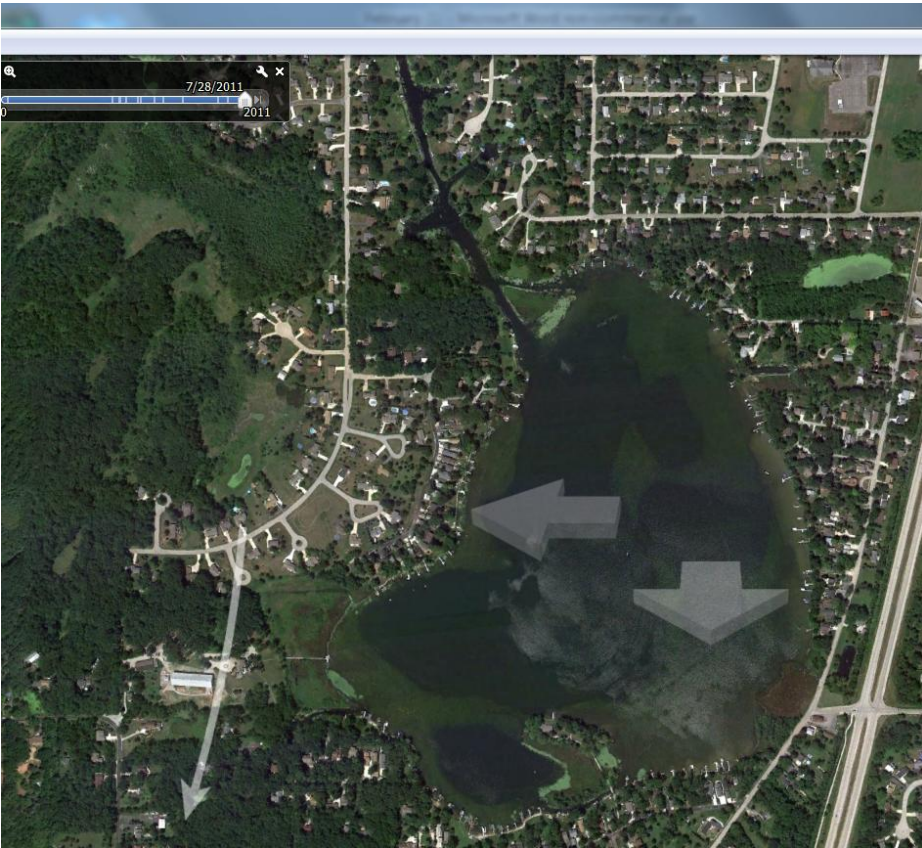
How about in 1998?



Where would Terry or Buck place a tin or marker on the dam?



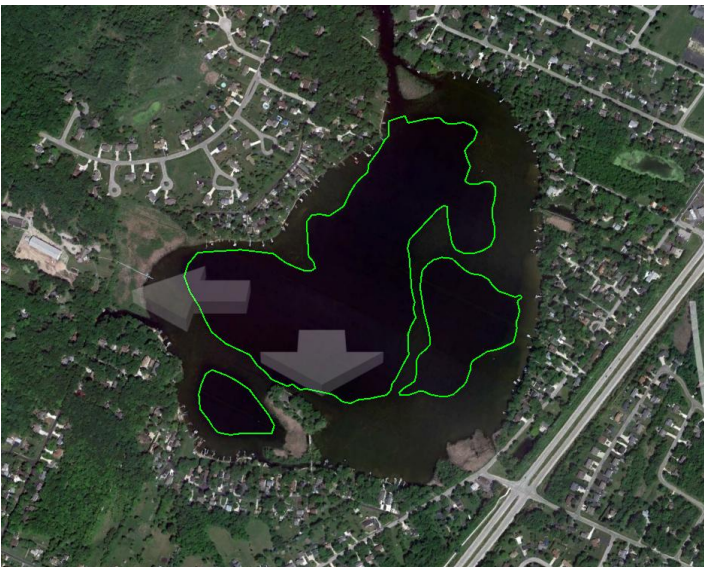
Waubeesee - Can you see the weedline?



What are we looking for? Inlets and outlets, Water Color, Boat traffic, Launches, and ?

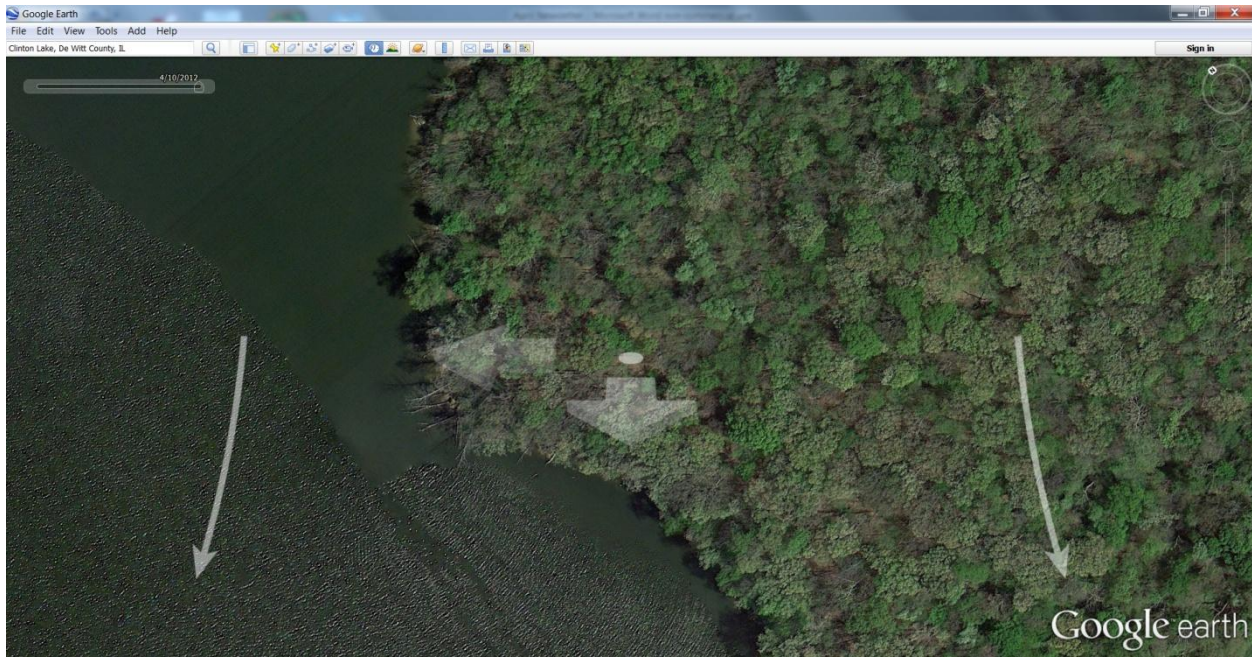
How about when you create a path? When you create the path you can scroll through the years to make your best map.

Now you have a map before you are on the lake!

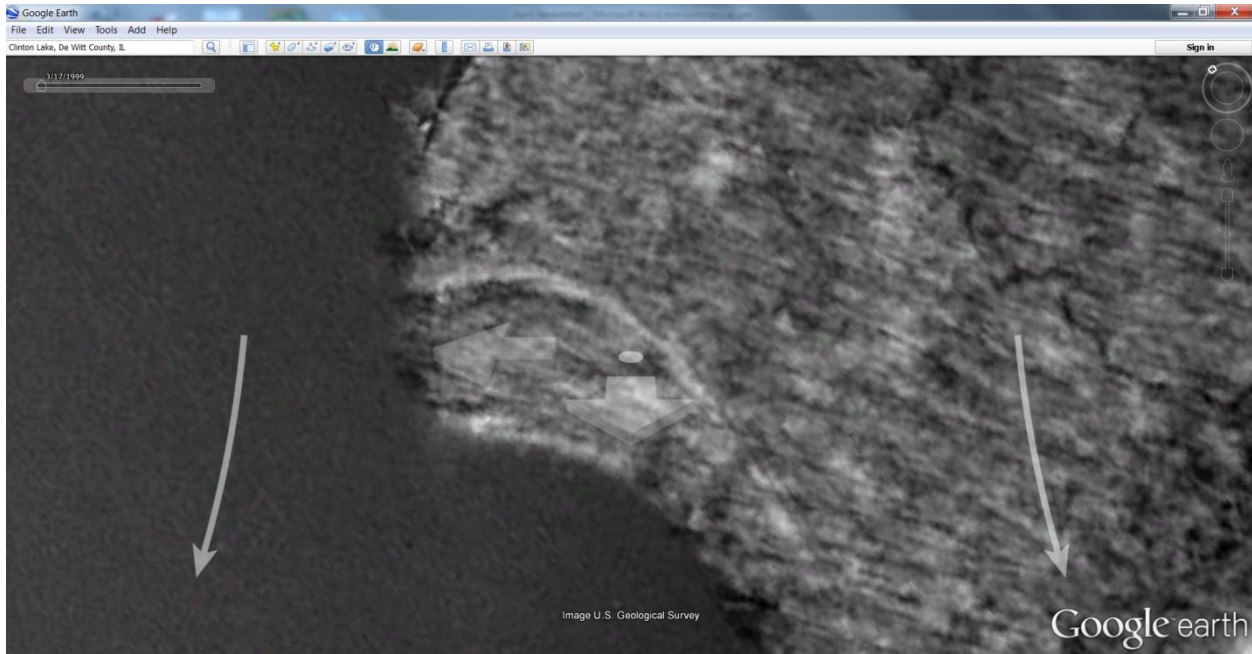




Where is the road that crosses the channel?



Do you see it now?



The fish can see it! The fish still know the roadbed is there.